

## Argentine Ants (Linepithema humile)

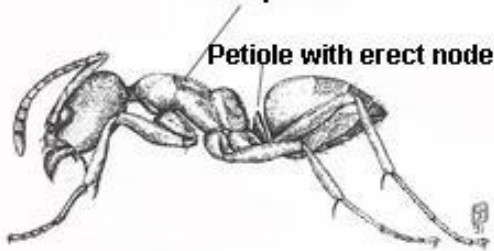


Like their name says, Argentine Ants originally came from Argentina. Now they are in many part of the world and a major pest in Southern California. The workers are only about and eighth of an inch long and they can squeeze through tiny holes and cracks to enter a building. They will enter a building in search of food and water, especially during long dry periods. They can sometimes be found crawling on bathroom ceilings or around electrical outlets.

Most ants have only one queen in their colony. Argentine ants can have as many as eight queens per thousand workers. Their food preference is sweets but they can also eat protein. Inside a house they will feed on sugars, syrups, honey, fruit juice and meat. They may make long trails from their nest to a food source.

You should always try to find and remove a food source (such as open food and spillage on kitchen counters. Also seal as many entry cracks as possible.

Thorax uneven in shape



Petiole with erect node

It can be identified by having only one node in back



**Paratex Pest Solutions**

**1-800-GOT BUGS?** (800 542 1234)

**SOLUTIONS**