

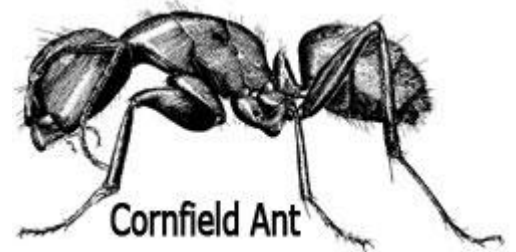
Moisture Ants

(Cornfield Ants)
(Yellow Ants)



Moisture ants are a wood damaging insect and they can weaken wooden structures. They prefer to nest in water-damaged and rotting wood so the real damage may likely be caused by water. It is unlikely this ant will do extensive damage and the long-term solution may be to find and eliminate a water leak or source of moisture.

Moisture ants do not eat wood. They are simply nesting in it and will construct galleries (tunnels) in it. They feed on sweet materials and colonize aphids for their honeydew. If an area inside a wall is opened the wood may have many galleries. This is usually behind a shower wall that has been leaking or a similar area where moisture has been an ongoing problem. It is often a localized situation involved replacement of wet wood and proper caulking.



The first sign of moisture ants is often the emergence of winged reproduction insects (or swarmers). These insects are emerging from a nest. The nest may be in wood buried in the ground and under a concrete slab. It may be totally inaccessible and the swarmers may appear each year at the same time as the female reproductive insects emerge.



Paratex Pest Solutions

1-800 GOT BUGS?

(1-800-542-1234)

SOLUTIONS