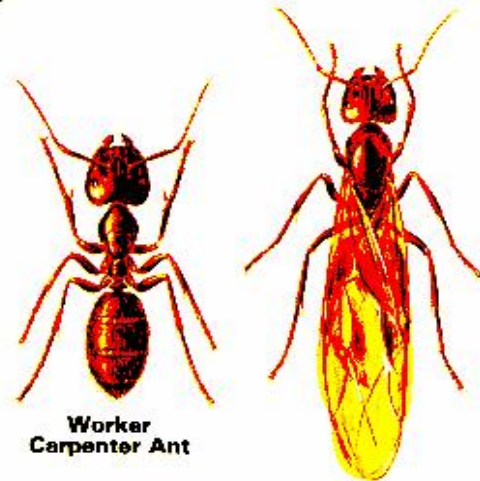


Carpenter Ants

Carpenter Ants are among the largest ants in North America and they are found in abundance in the Pacific Northwest. They are considered a structural pest and they can cause structural damage. Infestations must be disclosed under the standards of reports required for home financing or real estate transfer. While they don't actually eat the wood like termites, ants excavate tunnels. These galleries are smooth, as sandpapered, and often the sawdust frass is seen nearby.



Worker Carpenter Ant
Winged Female Carpenter Ant
(Camponotus pennsylvanicus)

Carpenter ants eat nectar on shrubs and trees and can also herd aphids, which they milk for their honey-dew secretions. A building can be infested by a fertile queen or by the migration on a whole colony. Sometimes a main nest is located outside, but a satellite nest is located within the crawl space or wall void structure. Ants can be brought into a home on firewood, enter through openings in foundations, or even cross onto roof areas by overhanging branches or telephone wires.

Any type of home or structure can be infested. Among commonly mined portions are porch pillars, supporting timbers, sill plates, joists, studs and casings. They also nest in wall voids and ceiling insulation. A common location for a nest is in a wall on the ground floor of a kitchen near a dishwasher. They are easiest to control when the nest is new and localized. When ants are well-established and in particular, when they are in flat roofs or open-beam ceilings, it can be very difficult. If the colony is large and well-established, repairs may be required. Sometimes, there is a moisture condition or rot-problem needing correction. Ants may find these conditions attractive.

Ants may become active as early as January and February, but they are usually most noticeable during summer months, being less active from October through February. The presence of winged ants indicates a colony is at least three years old. A typical pattern is for people to see ants in the summer and feel they've gone away during the winter months when they are usually dormant and not seen. They're probably still there, just not visible.



ant damage



Paratex Pest Solutions
1-800 GOT BUGS?
(800 542 1234)

SOLUTIONS